

motion was a consistent feature that occurred in all experiments. This implies that OHCs deformed, as vectors from different points along the cell membrane had orientations incompatible with rigid rotation around the same center of rotation.

Standard confocal images were acquired before and after acquisition of each image pair obtained during sound stimulation. Structural changes were not seen in any preparation. In a separate series of experiments, Reissner's membrane was penetrated with microelectrodes to measure the cochlear microphonic potential evoked by stimulation with the identical level, duration and frequency that was used during actual experiments. The stimulation caused no change of the microphonics.

The motion pattern was sensitive to manipulations known to affect OHC function. After 15–20 minutes of continuous acoustic overstimulation at levels 12–20 dB above those used during image acquisition, reticular lamina displacements increased in 7 of 8 image pairs (mean increase 76%, range –22 to +240%). Basilar membrane displacements also increased (mean +18%, range –4 to +78%). OHCs were deformed also after the overstimulation, although minor changes of vector orientation occurred. In one preparation, 20 mM of 2,3-butanedione monoxime was perfused through the scala tympani. This compound blocks OHC electromotility *in vitro*<sup>13</sup>. Thirty minutes after adding the drug, OHC vectors had the same orientation as vectors at the reticular lamina, implying absence of deformation. Reticular lamina vibration amplitudes increased after application of the drug (+32%), whereas basilar membrane displacement decreased by 50%. Thus, OHCs controlled a part of the vibration despite the relatively high stimulus level.

In summary, we found that sound stimulation caused cyclic deformation of OHCs and that the basilar membrane and reticular lamina had different centers of rotation. OHC deformation may have important implications, given that these cells respond to mechanical stimuli directed at the cell membrane<sup>14</sup>, and that they possess a chloride current activated by membrane stretch<sup>15</sup>. By showing that the basilar membrane and reticular lamina are capable of independent motion, an important feature of the dynamic model (Fig. 1c) is confirmed, although we did not

observe compression of the organ. The classical rigid-body theory of organ motion is thereby refuted. This differential motion also explains how forces generated by prestin can so profoundly affect hearing sensitivity. Contrary to previous assumptions, the hearing organ has a highly dynamic structure that provides a flexible framework for coupling force generation to vibration.

Note: Supplementary information is available on the Nature Neuroscience website.

#### Acknowledgments

J. Bruton, J. Lännergren, M. Ulfendahl, T. Ren, L. Järlebark, A. Katz and Å. Flock are acknowledged for discussions and gift of equipment. Supported by the Swedish Research Council, the Tysta Skolan Foundation, the National Association for Hard of Hearing People, Tore Nilson Foundation, the Royal Swedish Academy of Sciences, Swedish Society for Medical Research, Swedish Medical Society and funds of the Karolinska Institute.

#### Competing interests statement

The authors declare that they have no competing financial interests.

RECEIVED 20 DECEMBER 2002; ACCEPTED 7 MARCH 2003

- Hudspeth, A.J. *Nature* 341, 397–404 (1989).
- Zheng, J. *et al. Nature* 405, 149–155 (2000).
- Lieberman, M.C. *et al. Nature* 419, 300–304 (2002).
- ter Kuile, E. *Pflügers Arch.* 79, 146–157 (1900).
- Hemmert, W., Zenner, H.-P. & Gummer, A.W. *Biophys. J.* 78, 2285–2297 (2000).
- Hu, X., Evans, B.N. & Dallos, P. *J. Neurophysiol.* 82, 2798–2807 (1999).
- Mammano, F. & Ashmore, J.F. *Nature* 365, 838–841 (1993).
- Nilsen, K.E. & Russell, I.J. *Nat. Neurosci.* 2, 642–648 (1999).
- Nuttall, A.L., Guo, M. & Ren, T. *Hearing Res.* 131, 39–46 (1999).
- Fridberger, A., Boutet de Monvel, J. & Ulfendahl, M. *J. Neurosci.* 22, 9850–9857 (2002).
- Ulfendahl, M., Khanna, S.M., Fridberger, A., Flock, Å. & Jäger, W. *J. Neurophysiol.* 76, 3850–3862 (1996).
- Horn, B.K.P. & Schunck, B.G. *Artif. Intell.* 17, 185–203 (1981).
- Fronlov, G.I., Mammano, F. & Kachar, B. *J. Physiol.* 531, 667–676 (2001).
- Brundin, L., Flock, Å. & Canlon, B. *Nature* 342, 814–816 (1989).
- Rybalchenko, V. & Santos-Sacchi, J. *J. Physiol.* (in press).

## Voxel-based lesion–symptom mapping

Elizabeth Bates<sup>1</sup>, Stephen M. Wilson<sup>2</sup>, Ayse Pinar Saygin<sup>1</sup>, Frederic Dick<sup>1</sup>, Martin I. Sereno<sup>1</sup>, Robert T. Knight<sup>3,4</sup> and Nina F. Dronkers<sup>4,5</sup>

<sup>1</sup> Department of Cognitive Science, University of California, San Diego, California 92093, USA

<sup>2</sup> Neuroscience Interdepartmental Program, University of California, Los Angeles, California 90095, USA

<sup>3</sup> Department of Psychology and Helen Wills Neuroscience Institute, University of California, Berkeley, California 94720, USA

<sup>4</sup> Center for Aphasia and Related Disorders, VA Northern California Health Care System, 150 Muir Road, Martinez, California 94553, USA

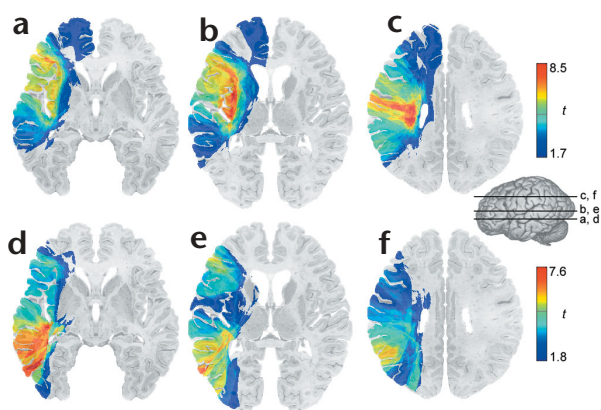
<sup>5</sup> Departments of Neurology and Linguistics, University of California, Davis, California 95616, USA

Correspondence should be addressed to N.F.D. (dronkers@ucdavis.edu)

Published online 21 April 2003; doi:10.1038/nn1050

For more than a century, lesion–symptom mapping studies have yielded valuable insights into the relationships between brain and behavior, but newer imaging techniques have surpassed lesion analysis in examining functional networks. Here we used a new method—voxel-based lesion–symptom mapping (VLSM)—to analyze the relationship between tissue damage and behavior on a voxel-by-voxel basis, as in functional neuroimaging. We applied VLSM to measures of speech fluency and language comprehension in 101 left-hemisphere-damaged aphasic patients: the VLSM maps for these measures confirm the anticipated contrast between anterior and posterior areas, and they also indicate that interacting regions facilitate fluency and auditory comprehension, in agreement with findings from modern brain imaging.

Localization of cognitive processes through lesion analysis continues to reveal new information about brain–behavior relationships in patient populations<sup>1–6</sup>. In lesion analysis, patients are typically grouped either by lesion or by behavior. In the ‘lesion-defined’ approach, the behavioral performance of a group of patients with a common area of injury (for example, dorso-lateral prefrontal cortex) is compared to that of a control group or another patient group<sup>4,5</sup>. This method is valuable for assessing the functional roles of particular regions of interest (ROIs), but can lose information if an ROI contains multiple subregions that

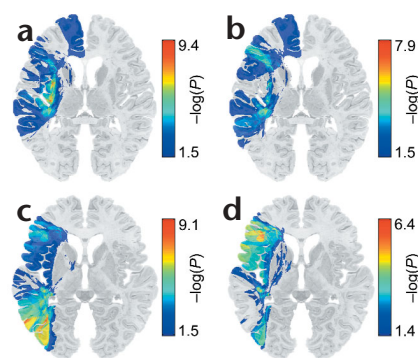


**Fig. 1.** Representative slices from VLSM maps computed for fluency and auditory comprehension performance of 101 aphasic stroke patients. These maps are colorized depictions of *t*-test results evaluating patient performance on a voxel-by-voxel basis. Patients with lesions in a given voxel were compared to those without lesions in that voxel on measures of fluency (a–c) or auditory comprehension (d–f). High *t*-scores (red) indicate that lesions to these voxels have a highly significant effect on behavior. Dark blue voxels indicate regions where the presence of a lesion had relatively little impact on the behavioral measure. Only voxels that were significant at  $P = 0.05$  (controlling the expected proportion of false positives) are shown. The Bonferroni-corrected significance cutoffs are also indicated on the scales by means of gray bars. Lesions within the insula (b) and deep parietal white matter (c) had the most impact on fluency, whereas injury to the middle temporal gyrus (d) produced the largest effect on measures of auditory comprehension. The study was approved by the VA Northern California Health Care System and UCSD Human Research Protection Programs, and all participants gave informed consent.

each contribute to behavior. In addition, regions outside the ROI that are part of a distributed functional network may be overlooked. In the ‘behavior-defined’ approach, patients are grouped according to whether or not they show a specific behavioral deficit<sup>2,6</sup>, and their lesions are reconstructed in a common stereotactic space. Lesion reconstructions from patients with the deficit are overlaid to find common area(s) of infarction, and compared to lesion overlays from patients without the deficit. These contrasting overlays or subtracted images are effective in identifying brain regions that may contribute to a cognitive skill, but in situations where the behavioral data are continuous rather than binary, a cut-off must be applied, and information reflecting varying degrees of performance can be lost.

Positron emission tomography (PET) and functional magnetic resonance imaging (fMRI) studies in normal adults have produced a host of new findings that have refined previous lesion-based models of neural organization<sup>7,8</sup>. The VLSM method described here uses the same voxel-based procedures that are used to analyze functional neuroimaging data, thus avoiding some of the limitations of traditional lesion analysis methods. Notably, VLSM does not require patients to be grouped by either lesion site or behavioral cutoff, but instead makes use of continuous behavioral and lesion information. By analyzing continuous behavioral data on a voxel-by-voxel basis, this method is also related to recent voxel-based morphometry studies that associate gray and white matter tissue density with continuous behavioral data<sup>9</sup>. Another important precursor is work correlating continuous metabolic data for a number of ROIs with continuous behavioral measures<sup>10</sup>.

We analyzed data on speech fluency and language comprehension for 101 left-hemisphere-injured stroke patients who showed



**Fig. 2.** Representative slices from maps of voxel-by-voxel ANCOVAs covarying out particular anatomically defined voxels of interest. One-tailed *P*-values are plotted. (a) Fluency, factoring out a voxel at the center of Broca’s area. (b) Fluency, factoring out a voxel in the anterior insula. (c) Comprehension, factoring out a central voxel in Wernicke’s area. (d) Comprehension, factoring out a voxel in the center of the MTG.

some degree of speech or language impairment. Dissociations between speech production and comprehension have had an important role in the history of aphasiology. For this reason, we focused on the fluency and auditory comprehension subtests of a standard assessment tool, the Western Aphasia Battery (WAB)<sup>6</sup>. Fluency scores reflect a combination of articulatory, word-finding and sentence-production skills, whereas the auditory comprehension measure represents the average score on yes/no questions, single-word recognition and enactment of 1-, 2- and 3-part commands. Patients’ lesions were reconstructed onto templates by a board-certified neurologist (R.T.K.) who was blind to the clinical status of each patient<sup>2,5</sup>. The lesion reconstruction technique has been used by many laboratories using a variety of templates<sup>1,3,6,11</sup> and has been shown to be reliable in a number of studies<sup>4,11</sup>. Patients were tested at least one year after stroke. All were native English speakers with normal or corrected-to-normal vision and hearing.

For each voxel, patients were divided into two groups according to whether they did or did not have a lesion affecting that voxel. Behavioral scores were then compared for these two groups, yielding a *t*-statistic for each voxel (Fig. 1). Fluency was most affected by lesions in the insula (Fig. 1b) and in the arcuate/superior longitudinal fasciculus in parietal white matter (Fig. 1c). Auditory comprehension was most affected by lesions in the middle temporal gyrus (MTG; Fig. 1d), with significant contributions also seen in dorsolateral prefrontal cortex (Fig. 1e) and parietal association cortex (Fig. 1f). Alternatives to the *t*-statistic are also possible with VLSM, such as measures of effect size; in the present study, maps of effect size were very similar to the *t*-maps shown here.

This anterior–posterior contrast for fluency versus comprehension is consistent with historical findings in aphasia. However, the regions typically associated with these deficits (Brodmann areas (BA) 44 and 45 in the inferior frontal gyrus (Broca’s area) for fluency; posterior BA 22 in the superior temporal gyrus (Wernicke’s area) for comprehension), were not the areas most reliably associated with deficits. In fact, the regions with the highest *t*-scores were the middle temporal areas, previously implicated in lesion<sup>12</sup> and fMRI<sup>8,13</sup> studies of auditory comprehension, inferior parietal and dorsolateral prefrontal cortex, implicated recently in sentence comprehension<sup>12</sup>, and the left anterior insula, identified as a region important for speech production through lesion analysis<sup>2</sup> and recent PET studies<sup>14,15</sup>. Finally, VLSM also indicated a role for white matter in fluency, further complementing results from functional imaging.

In lesion studies, an area may emerge as relevant either because it has a direct causal role or because of a diaschitic effect involving highly correlated lesions some distance away. Indeed, the apparent role of the insula in fluency could be an indirect consequence of lesions to Broca's area, and the role of the middle temporal gyrus in comprehension could be a consequence of lesions to Wernicke's area. VLSM can be used to test hypotheses such as these. Based on anatomical criteria, we identified central voxels in four *a priori* ROIs: Broca's area, the anterior insula, Wernicke's area and the middle temporal gyrus. We constructed four maps factoring out the effects of these voxels by carrying out analyses of covariance (ANCOVAs) at all other voxels using the state (intact or lesioned) of each voxel of interest as the covariates (Fig. 2). These maps showed that the anterior insula is critical for fluency, independent of Broca's area (Fig. 2a), whereas Broca's area is not especially important for fluency once lesions to the insula have been accounted for (Fig. 2b). The MTG remained a significant factor in auditory comprehension after Wernicke's area was factored out (Fig. 2c), but after the MTG was factored out, the contribution of Wernicke's area was no longer apparent (Fig. 2d).

With VLSM, similarity between statistical maps can be assessed by calculating the correlation between *t*-scores on two tasks, treating voxels as subjects. When fluency and auditory comprehension were compared in this manner, a correlation of 0.59 was obtained (see Supplementary Fig. 1 online). This correlation reflects approximately 35% overlap in the variance and suggests that areas associated with performance on one measure can, to some extent, predict areas associated with the other. Indeed, many patients with lesions in the peri-Sylvian areas had moderate-to-low scores in both fluency and comprehension, suggesting that these areas might support core language functions common to both measures. Future work will use similar correlative techniques to quantitatively compare VLSM maps with activation maps from functional imaging studies of normal subjects performing the same or similar tasks.

Here we used a new technique to analyze lesion-symptom relationships in a large group of left-hemisphere-lesioned patients, using behavioral data from two well-studied tasks: fluency and language comprehension. VLSM is an improvement on previous lesion-symptom mapping techniques because it uses all available

information, eliminating reliance on cutoff scores, clinical diagnoses or specified regions of interest. Thus, it allows for additional areas to emerge in the exploration of networks that support a given behavior. As such, it also serves as a bridge between classic approaches to lesion-symptom mapping and modern functional imaging.

Note: Supplementary information is available on the Nature Neuroscience website.

#### Acknowledgments

The authors thank D.P. Wilkins and C. Ludy for comments, suggestions and assistance. This work was funded by the Department of Veterans Affairs Medical Research, the National Institute of Neurological Disorders and Stroke (PO1 NS17778, NINDS 21135, PO1 NS40813) and the National Institute of Deafness and Communication Disorders (NIH/NIDCD 2 R01 DC00216).

#### Competing interests statement

The authors declare that they have no competing financial interests.

RECEIVED 17 NOVEMBER 2002; ACCEPTED 11 MARCH 2003

- Adolphs, R., Damasio, H., Tranel, D., Cooper, G. & Damasio, A.R. *J. Neurosci.* 20, 2683–2690 (2000).
- Dronkers, N.F. *Nature* 384, 159–161 (1996).
- Naeser, M.A. & Hayward, R.W. *Neurology* 28, 545–551 (1978).
- Friedrich, F.J., Egly, R., Rafal, R.D. & Beck, D. *Neuropsychology* 12, 193–207 (1998).
- Chao, L.L. & Knight, R.T. *J. Cogn. Neurosci.* 10, 167–177 (1998).
- Kertesz, A. *Aphasia and Associated Disorders: Taxonomy, Localization and Recovery* (Grune & Stratton, New York, 1979).
- Petersen, S.E., Fox, P.T., Posner, M.I., Mintun, M. & Raichle, M.E. *Nature* 331, 585–589 (1988).
- Price, C.J. *J. Anat.* 197, 335–359 (2000).
- Maguire, E.A. *et al. Proc. Natl. Acad. Sci. USA* 97, 4398–4403 (2000).
- Metter, E.J. *et al. Arch. Neurol.* 47, 1235–1238 (1990).
- Knight, R.T., Scabini, D., Woods, D.L. & Clayworth, C. *Electroencephalogr. Clin. Neurophysiol.* 70, 499–509 (1988).
- Dronkers, N.F., Wilkins, D.P., Van Valin, R.D. Jr., Redfern, B.B. & Jaeger, J.J. *Cognition* (in press).
- Wise, R. *et al. Brain* 114, 1803–1817 (1991).
- Blank, S.C., Scott, S.K., Murphy, K., Warburton, E. & Wise, R.J.S. *Brain* 125, 1829–1838 (2002).
- Wise, R.J.S., Greene, J., Büchel, C. & Scott, S.K. *Lancet* 353, 1057–1061 (1999).

## Conflict adaptation effects in the absence of executive control

Ulrich Mayr, Edward Awh and Paul Laurey

Department of Psychology, University of Oregon, Eugene, Oregon 97403, USA  
Correspondence should be addressed to U.M. (mayr@darkwing.uoregon.edu)

Published online 21 April 2003; doi:10.1038/nn1051

According to the 'conflict-monitoring' model, a leading theory of cognitive control<sup>1–4</sup>, information-processing conflict registered in the anterior cingulate cortex (ACC) triggers the prefrontal cortex to reduce conflict susceptibility. Here we show that the existing empirical support for an online modulation of sus-

ceptibility to conflict through immediately preceding conflict, the 'conflict-adaptation effect'<sup>1,5</sup>, needs to be reevaluated. In a human cognitive control task, we found that it was not the stimulus-independent level of conflict that was responsible for the conflict-adaptation effect but rather an episodic memory phenomenon: stimulus-specific priming<sup>6</sup>.

The so-called flanker task<sup>7,8</sup> is frequently used to study cognitive control. Subjects respond with a left or right key press to a central target arrow while ignoring congruent (>>>) or incongruent (<<<) flanker arrows. The presumed role of cognitive control in this situation is to enhance target processing and/or exclude flanker processing. Control efficiency is indexed by the congruency effect, the performance decline on incongruent compared to congruent trials. An open question is how control itself is controlled in such a situation<sup>1</sup>. That is, how does the cognitive system determine when regulation becomes necessary? The conflict-monitoring model suggests that control is modulated through a relatively 'dumb' system, situated in the ACC, which constantly extracts from ongoing information processing an abstract index of information-processing conflict<sup>1</sup>. A high value on this index triggers regulative control sites (such as prefrontal cortex) to boost control activity.